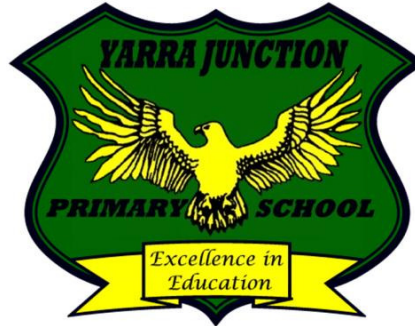


Yarra Junction Primary School

School Number: 3216



MEDICATION POLICY

Date Implemented	29/04/2014
Author	Glenda Jewell , Wellbeing Coordinator
Approved By	School Council
Approval Authority School Council President or Nominee: (Signature & Date)	_____/_____/2014
Approval Authority Principal: (Signature & Date)	_____/_____/2014
Responsible for Review	Wellbeing Coordinator
Review Date	29 th April 2017
References	<ul style="list-style-type: none">• DEECD Anaphylaxis Policy• DEECD Health Support Planning Policy• Asthma Management Policy• First Aid Policy

Yarra Junction Primary School

2370 Warburton Hwy,

Yarra Junction 3797

Ph: 5967 1544

Fax: 5967 1447

www.yjps.vic.edu.au

E-mail: yarra.junction.ps@edumail.vic.gov.au



MEDICATION POLICY

Rationale:

- Teachers and schools are often asked by parents to administer medication for their children while at school. It is important that such requests are managed in a manner that is appropriate, ensures the safety of students, and fulfills the duty of care of staff.

Aims:

- To ensure the medications are administered appropriately to students in our care.

Implementation:

- Children who are unwell should not attend school.
- If a student becomes unwell at school the parent/carer will be contacted to collect their child
- The Leadership Committee has agreed that the school trained First Aid Officers will be responsible for administering prescribed medications to children.
- Non-prescribed oral medications (eg: head-ache tablets) unless parents give written permission or are contacted, will not be administered by school staff.
- All parent requests to administer prescribed medications to their child must be in writing on the form provided (Appendix A) and must be supported by specific written instruction from the medical practitioner or pharmacist including the name of the student, dosage and time to be administered (original medications bottle or container should provide this information).
- Requests for prescribed medications to be administered by the school 'as needed' will cause the First Aid Officer to seek further written clarification from the parents.
- It is the parent's responsibility to ensure all medication supplied to the school have not passed their use by date.
- All student medications must be in the original containers, must be labelled, must have the quantity of tablets confirmed and documented, and must be stored in either the locked office first aid cabinet or office refrigerator, whichever is most appropriate.
- All medication stored by the school must be logged in on the Stored Medicines Register, (Appendix B) .
- Classroom teachers will be informed by the First Aid Officer of prescribed medications for students in their charge and classroom teachers will release students at prescribed times so that they may visit the school office and receive their medications from the First Aid Officer.
- All completed Medication Request Forms and details relating to students, their prescribed medication, dosage quantities and times of administering, will be kept and

recorded in a confidential medications register located in the school office, by the First Aid Officer in the presence of, and confirmed by, a second staff member.

- Students involved in school camps or excursions will be discreetly administered prescribed medications by the ‘Teacher in Charge’ or First Aid Officer, in a manner consistent with the above procedures, with all details recorded in the medications register. Completed pages will be returned to the official medications register on return from the camp or excursion to school.
- Students are not permitted to be in possession of any medication at any time. Exceptions to this are:
 - Reliever inhalers, for use by asthmatic students.
 - Throat lollies, e.g. soothers, for the relief of painful throats. However, the student must be instructed not to share with other students.
- Parents/carers of students that may require injections are required to meet with the principal to discuss the matter.
- Asthma medication is to be carried out as directed in the student’s Asthma Action Plan.
- Epipens will be stored and administered as per the Anaphylaxis Action Plan.
- Please refer to school Asthma policy, First Aid policy, and Anaphylaxis policy.
- Please refer to Drug related Incident Plan Attached to this policy.

ADMINISTRATION

Prior to administering medication to a student, staff will check that it is:

- The right student
- The right medication
- The right time for the medication
- The right dose, according to parental instruction and prescription
- The right route of administration

All medication administered will be administered as per the Medication Authority Form (Appendix A) and logged in the Medication Administration Register. (Appendix B)

- **INHALANTS**

- Asthma will be managed according to the Student Asthma Plan and School Asthma Policy.
- Parents or guardians of a child known to have asthma must supply an Asthma Management Plan. (Appendix C) It is expected that this will be updated on a yearly basis.
- Reliever medication and an individual spacer will be provided by parents/carers of students with Asthma Management Plans.
- Blue reliever medication and Spacer will be stored with child's name in the first aid room. When attending excursions and camps students must carry their reliever medication. Administration of this medication is to be monitored by the supervising teacher in charge.
- The school will maintain a supply of Ventolin™ and spacers for use when children do not have their own personal reliever medication available.

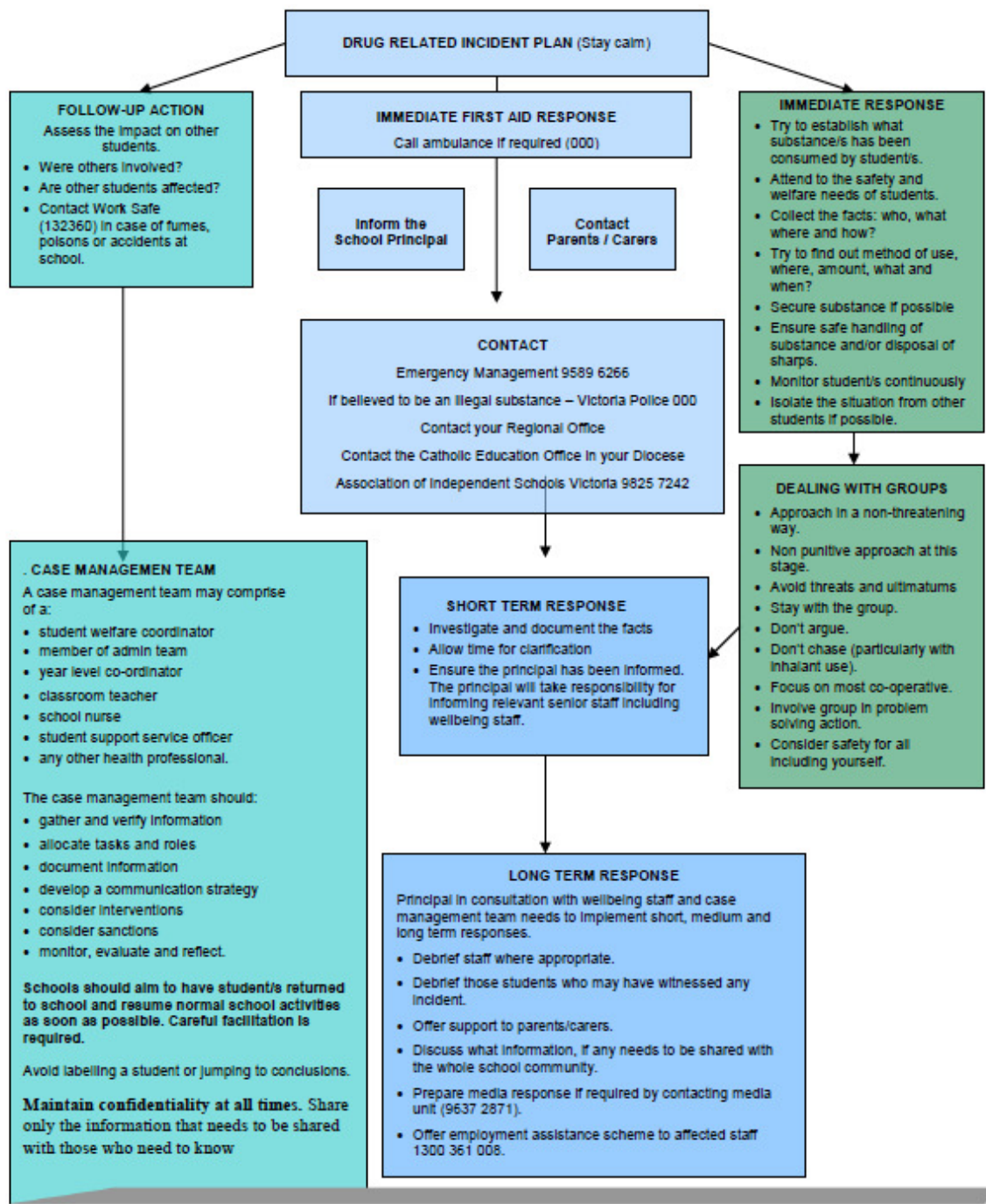
- If a situation arises where a child NOT known to have asthma experiences asthma-like symptoms, Ventolin will be given as advised in the Victorian Schools Asthma Policy guidelines for Asthma First Aid.

- **EPIPENS**

- Anaphylaxis will be managed according to the DEECD Anaphylaxis Guidelines and Ministerial order 706.
- Parents or guardians of a child known to have Anaphylaxis must supply an Anaphylaxis Management Plan (Appendix D) to the School. This is to be updated on a yearly basis.
- Parents have the responsibility to provide Epipens for students with life threatening allergies. The school will obtain and store a spare or 'backup' adrenaline auto-injection device(s) as part of the school first aid kit(s), for general use.
- Epipens will be stored in the staffroom, in an unlocked location accessible to all staff. The area is clearly labelled and Epipens are clearly marked with the child's name, class and the individual student's 'Anaphylaxis Action Plan' and "Management Plan".
- Epipens must be taken on all excursions/camps where the student is attending. It is the responsibility of the Teacher in Charge of the student to collect the Epipen.

Evaluation:

- This policy will be reviewed as part of the school's three-year review cycle.



The following resources provide additional frameworks for schools and support systems for students in relation to drug issues in schools.

- [Keeping in Touch](#): An intervention framework for school staff – Page 5. Developing a procedural framework – Page 7.
- [Retention and Reintegration](#): Cycle of intervention – Page 5. Summary of a young person involved in a drug-related incident - Page 8. Reintegration of students after relapse – Page 11.
- [Preventing drug-related harm – A guide for the Student Welfare Coordinator](#). This resource provides a set of evidence-based guidelines and tools to assist schools and their communities to address truancy and the associated risk of problematic substance use.

(Appendix A)

Yarra Junction Primary School

2370 Warburton Hwy,

Yarra Junction 3797

Ph: 5967 1544

Fax: 5967 1447

www.yjps.vic.edu.au

E-mail: yarra.junction.ps@edumail.vic.gov.au



Medication Authority Form
for a student who requires medication whilst at School/Camp

This form should be completed ideally by the student’s medical/health practitioner, for all medication to be administered at school. For those students with asthma, an Asthma Foundation’s *School Asthma Action Plan* should be completed instead. For those students with anaphylaxis, an ASCIA *Action Plan for Anaphylaxis* should be completed instead. These forms are available from section 4.5 *Student Health* in the Victorian Government School Reference Guide: www.education.vic.gov.au/referenceguide.

Please only complete those sections in this form which are relevant to the student’s health support needs.

Name of School: _____

Student’s Name: _____ Date of

Birth: _____

MedicAlert Number (if relevant): _____ Review date for this form: _____

Please Note: wherever possible, medication should be scheduled outside the school hours, e.g. medication required three times a day is generally not required during a school day: it can be taken before and after school and before bed.

Medication required:				
Name of Medication/s	Dosage (amount)	Time/s to be taken	How is it to be taken? (eg orally/topical/injection)	Dates
				Start date: / / End Date: / / <input type="checkbox"/> Ongoing medication

				Start date: / / End Date: / / <input type="checkbox"/> Ongoing medication
				Start date: / / End Date: / / <input type="checkbox"/> Ongoing medication
				Start date: / / End Date: / / <input type="checkbox"/> Ongoing medication

Medication Storage

Please indicate if there are specific storage instructions for the medication:

Medication delivered to the school

Please ensure that medication delivered to the school:

- Is in its original package
- The pharmacy label matches the information included in this form.

Self-management of medication

Students in the early years will generally need supervision of their medication and other aspects of health care management. In line with their age and stage of development and capabilities, older students can take responsibility for their own health care. Self-management should follow agreement by the student and his or her parents/carers, the school and the student's medical/health practitioner.

Please advise if this person's condition creates any difficulties with self-management, for example, difficulty remembering to take medication at a specified time or difficulties coordinating equipment:

Monitoring effects of Medication

Please note: School staff *do not* monitor the effects of medication and will seek emergency medical assistance if concerned about a student's behaviour following medication.

Privacy Statement

The school collects personal information so as the school can plan and support the health care needs of the student. Without the provision of this information the quality of the health support provided may be affected. The information may be disclosed to relevant school staff and appropriate medical personnel, including those engaged in providing health support as well as emergency personnel, where appropriate, or where authorised or required by another law. You are able to request access to the personal information that we hold about you/your child and to request that it be corrected. Please contact the school directly or FOI Unit on 96372670.

Privacy Statement

The school collects personal information so as the school can plan and support the health care needs of the student. Without the provision of this information the quality of the health support provided may be affected. The information may be disclosed to relevant school staff and appropriate medical personnel, including those engaged in providing health support as well as emergency personnel, where appropriate, or where authorised or required by another law. You are able to request access to the personal information that we hold about you/your child and to request that it be corrected. Please contact the school directly or FOI Unit on 96372670.

<u>Authorisation:</u>
Name of Medical/health practitioner:
Professional Role:
Signature: Date:
Contact details:
Name of Parent/Carer or adult/independent student**:
Signature: Date:

If additional advice is required, please attach it to this form

**Please note: Adult student is a student who is eighteen years of age and older. Independent student is a student under the age of eighteen years and living separately and independently from parents/guardians (See Victorian Government Schools Reference Guide)

(Appendix B)

Medication Storage Register

Yarra Junction Primary School



All medication received by the school, including Asthma Inhalers and Epipens MUST be recorded below.

Date	Students Name	Medication	Expiry date	Dosage	(oral/ Inhaled /injected)	Medication Authority received (Tick)	Parent/carer Signature	Stored (Location)	Logged in by	Checked By	Collected by
											JJ_
											JJ_
											JJ_
											JJ_
											JJ_
											JJ_
											JJ_
											JJ_
											JJ_

(Appendix C)

Medication Administration Log

Yarra Junction Primary School



This log **MUST** be completed by the first aid officer at the time of administering student medication and **MUST** be checked and counter signed by a second staff member.

Date (Day, month and year)	Time	Students Name	Name of Medication	Tick When Checked (√)				Comments	Administered by Sign	Staff member Checked By Sign
				Right Child	Right Medication	Right Dose	(oral/inhaled)			

